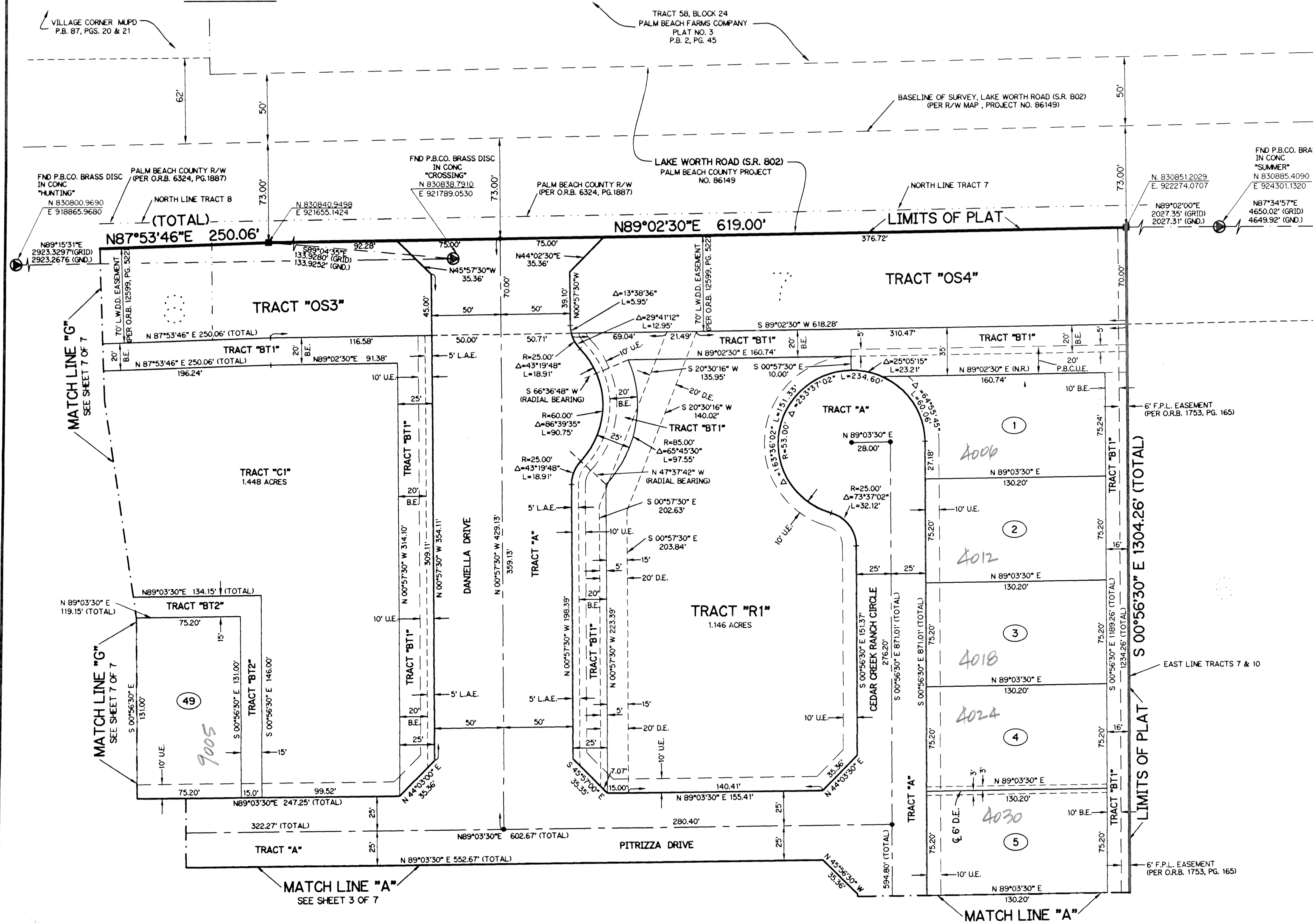
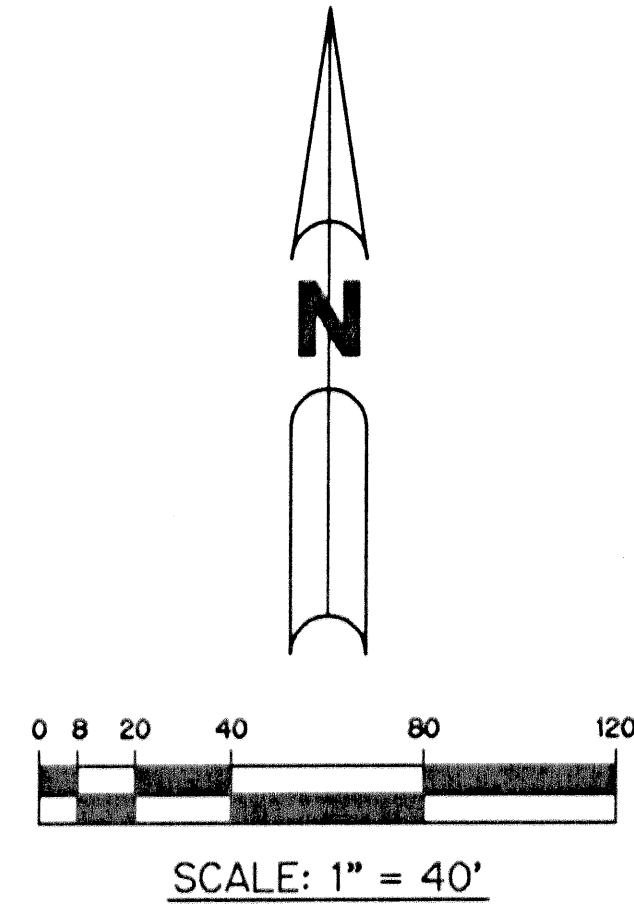


CEDAR CREEK RANCH P.U.D.

BEING A REPLAT OF ALL OF TRACT 10 AND A PORTION OF TRACTS 7, 8 AND 9,
BLOCK 28, PALM BEACH FARMS COMPANY PLAT NO. 3 AS RECORDED
IN PLAT BOOK 2, PAGES 45 THROUGH 54 OF THE PUBLIC
RECORDS OF PALM BEACH COUNTY, FLORIDA, LYING IN
SECTION 20, TOWNSHIP 44 SOUTH, RANGE 42 EAST.

SHEET 2 OF 7 JANUARY, 2002

THIS INSTRUMENT PREPARED BY
PERRY C. WHITE, P.S.M. 4213, STATE OF FLORIDA
LAWSON, NOBLE AND WEBB, INC.
ENGINEERS PLANNERS SURVEYORS
420 COLUMBIA DRIVE
WEST PALM BEACH, FLORIDA 33409
LB-6674

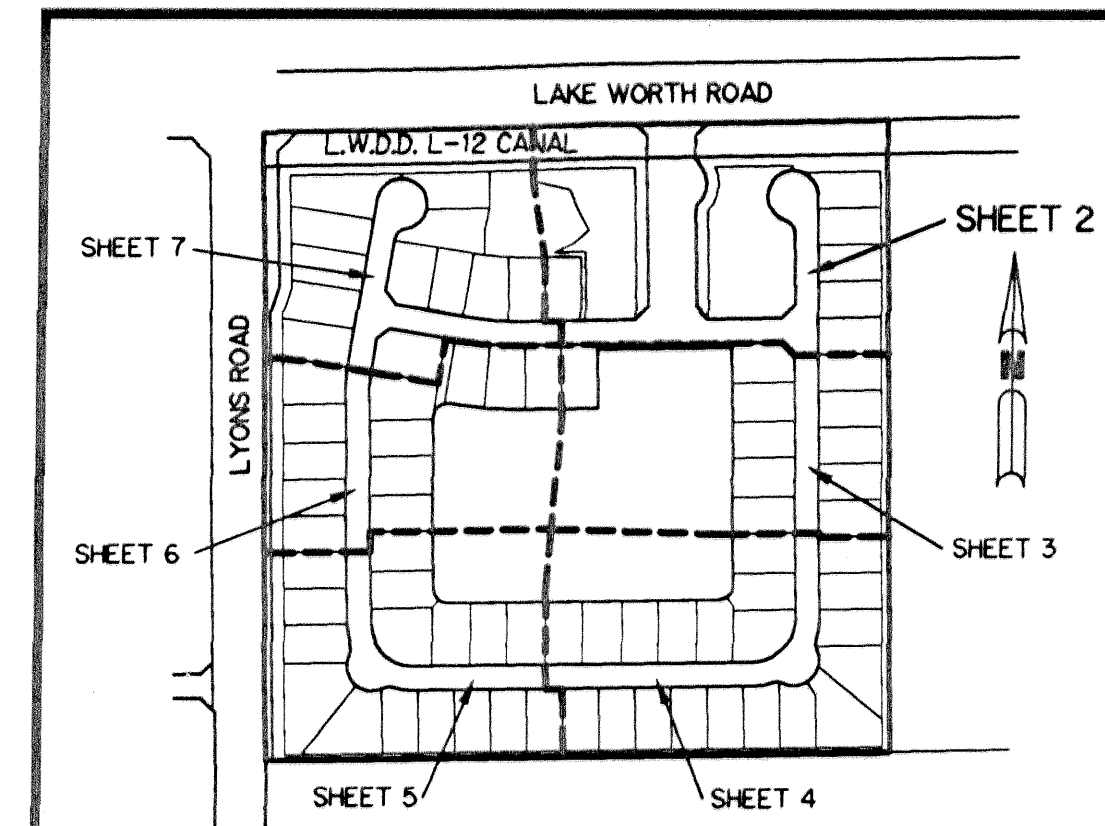


- LEGEND:**
- - SET PERMANENT REFERENCE MONUMENT, L.B. #6674
 - - FOUND PERMANENT REFERENCE MONUMENT, L.B. #6674
 - - SET PERMANENT CONTROL POINT, L.B. #6674
 - - FOUND PERMANENT CONTROL POINT, L.B. #6674
 - Δ - DELTA ANGLE
 - B.E. - BUFFER EASEMENT
 - CB - CHORD BEARING
 - CH - CHORD DISTANCE
 - CL - CENTERLINE
 - D.B. - DEED BOOK
 - D.E. - DRAINAGE EASEMENT
 - L - ARC LENGTH
 - L.A.E. - LIMITED ACCESS EASEMENT
 - L.M.A.E. - LAKE MAINTENANCE ACCESS EASEMENT
 - L.M.E. - LAKE MAINTENANCE EASEMENT
 - L.W.D.D. - LAKE WORTH DRAINAGE DISTRICT
 - N.R. - NOT RADIAL
 - N.T.S. - NOT TO SCALE
 - O.R.B. - OFFICIAL RECORD BOOK
 - P.B. - PLAT BOOK
 - P.S. - PAGES
 - P.S.M. - PROFESSIONAL SURVEYOR AND MAPPER
 - R - RADIUS
 - RAD. - RADIAL
 - R/W - RIGHT-OF-WAY
 - S.T. - SURVEY TIE
 - U.E. - UTILITY EASEMENT
 - P.B.F.C. - PALM BEACH FARMS COMPANY PLAT NO. 3 (P.B. 2, PG. 45)
 - (with number) - DENOTES TRACT NUMBER PER PALM BEACH FARMS COMPANY PLAT NO. 3 (P.B. 2, PG. 45)
 - N 737648.0171 E 905258.2326 - DENOTES STATE PLANE COORDINATES
 - P.B.C.U.E. - PALM BEACH COUNTY UTILITY EASEMENT

NOTE:

COORDINATES SHOWN ARE GRID COORDINATES
DATUM = NAD 83 (1990 ADJUSTMENT)
ZONE = FLORIDA EAST ZONE
LINEAR UNIT = U.S. SURVEY FEET
COORDINATE SYSTEM = 1983 STATE PLANE TRANSVERSE MERCATOR PROJECTION
ALL DISTANCES ARE GROUND
SCALE FACTOR = 1.00002125
PLAT BEARING = GRID BEARING
NO ROTATION

KEY MAP



SUBDIVISION: CEDAR CREEK RANCH PUD
BLOCK: 97
FLOOD MAP #: 1600A
ZONING: PUD
QUAD: 48
SE: 739
TAX: 739
PUD NAME: